

WHAT YOU CAN DO TO HELP



Hunters and trampers can contribute to wilding pine control most effectively by targeting widely spaced or individual trees within the Kaweka Forest Park buffer zone rather than sites where trees are growing more densely. We are particularly interested in trees that are well away from other infestations as these plants act as seed trees to re infest areas that have already been cleared. Much of the western part of the Forest Park is free of wilding pines and a priority for control is keeping these areas clear.

Smaller plants up to 50cm tall can usually be pulled out by hand. Shake any loose soil off the roots and discard the tree in a dry place or on top of vegetation. Have a quick look around, if there is one seedling it is likely there will be a few more.



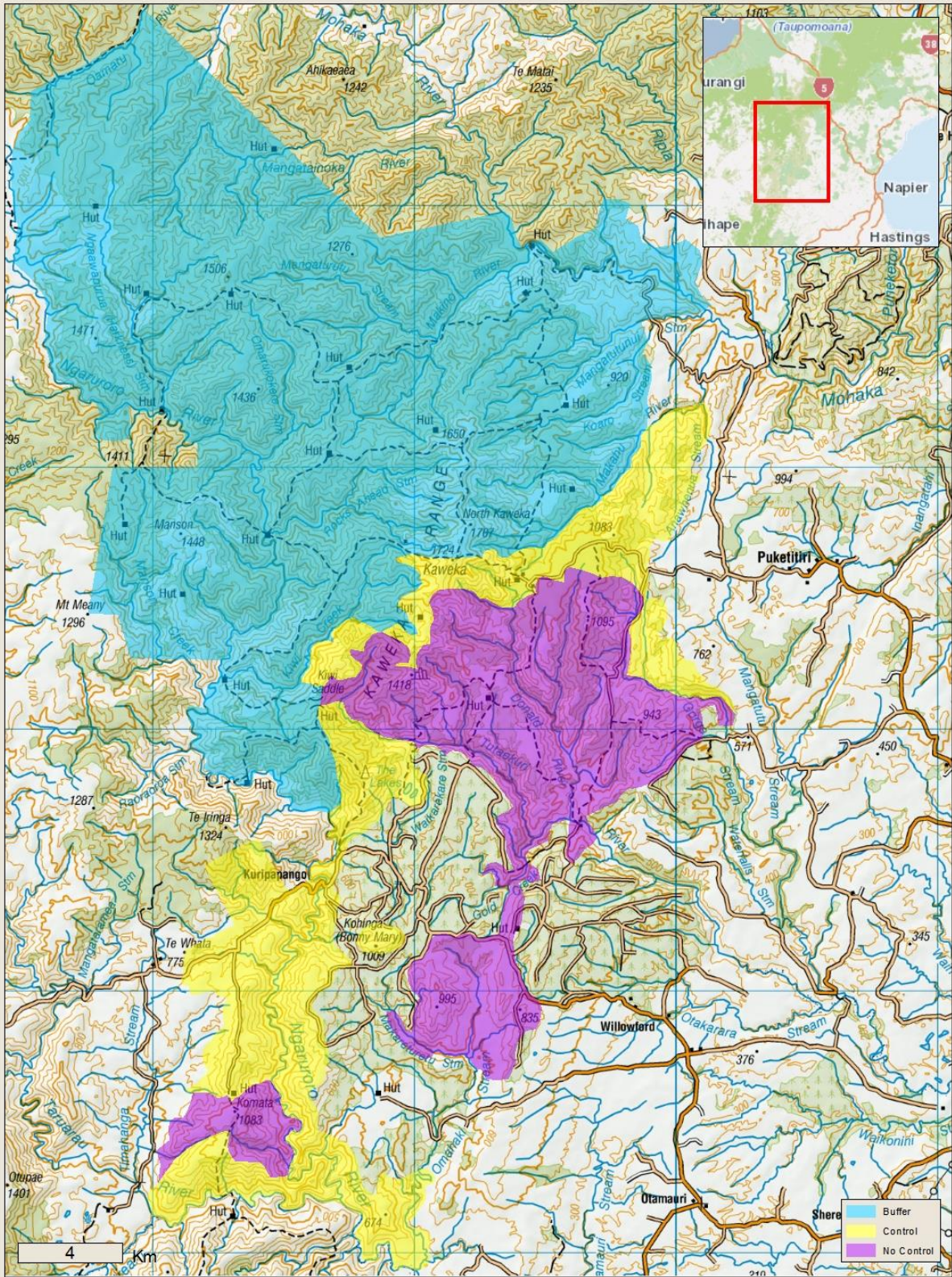
Those up to 10 centimetres diameter are easily felled using a folding saw if one is available. If not they can possibly be ring barked using a knife. When felling **all green needles must be removed** or the tree will continue to grow. This includes needles on the stem. On clay pans and scree be aware of underground branches popping up away from the main stem.



If a larger tree is found and cannot be removed then a GPS reference will allow a revisit to treat the tree during the next aerial control round. If no GPS is available mark the tree as accurately as possible on a topographical map. A brief description of the site to assist location would be useful. A quick search for small seedlings in the vicinity of any coning plants is a good idea.

Information on tree locations can be forwarded to:

Alan Lee: alee@doc.govt.nz Phone: 027 539 6278



NZGD 2000 New Zealand Transverse Mercator
 Not for publication nor navigation
 Crown Copyright Reserved
 1:1,654,735
 NZTopo, © Crown
 Produced by : mmarshall on 13/09/2019



Kaweka Forest Park Wilding Conifer Blocks



Department of Conservation
Te Papa Atawhai

New Zealand Government