

Agenda & Actions: Ruahine User's Group Meeting (RUG)



Figure 1 – Newly painted Taruarua Biv



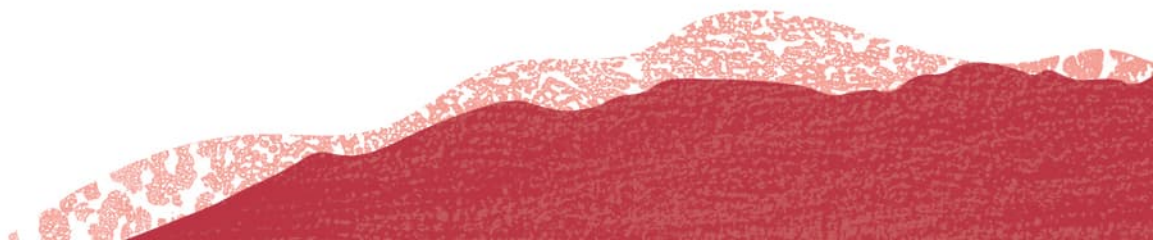
Figure 2 - Small scaled Skink, Mangatara

Date:	21/11/2022	Chair:	Dan Tuohy
Time:	19:00-21:15	Minute taker:	Julia Mackie (NTC)
Venue:	Dannevirke NZDA & Teams Meeting		
Attendees:	Kelly Hancock, Acting Operations Manager (DOC- Online), Dan Tuohy (DOC), Vince Payne (Ruahine Deerstalkers Assoc), Ian Patterson (NZDA Manawatu), Gary Trow & Mike Charlton (NZDA), John Montgomery (HTC), Janet Wilson (PNTMC), John Beech (MTSC and FMC), Peter Daly (Kawhatau Base Community Group - Online)		
Apologies:	Eleanor Arnst, Demelza Low (DOC), Megan D (FMC), Glenda Hooper (HTC), Lex Smith (HTC), Lisa Whittle (Mauri Oho)		

Agenda

- Welcome, Karakia, Introductions & Apologies
- Community updates
- DOC Heritage & Visitor updates
- DOC Biodiversity updates
- Public Access Update
- General business
- Set next meeting
- Closing Karakia

19:00	<p>Welcome, Karakia, Introductions & Apologies</p> <p><u>Karakia</u></p> <p>Kā toro ki runga, kā toro ki raro Kia mārangī mai ngā māramatanga Ā kui mā, Ā koro mā Hei aratakina i a tātou kia manawatīi Ki ngā mahi katoa</p> <p>Draw strength from above Draw strength from below Let the knowledge and understanding of our predecessors wash over us So, we may Follow their spirit of perserverance and apply it to our work today Acheiving great things</p>
-------	---



19:10

Topic – Community Group Updates

Lisa Whittle – Mauri Oho Jobs for Nature project.

Update from Mauri Oho is as follows:

- Mauri Oho had a NZDF heli operation on Friday 26 Oct.
- 230 traps were dropped off at the following locations:
 - Smith stream clearing (on saddle, nth of Smith Stream hut.
 - Hinerua hut
 - Longview hut
 - Daphne track - intersection of Daphne/Longview track
 - Sparrowhawk biv down to Makaroro
 - Te Koau - nth of Waitutu stream
 - Waratahs were dropped close to the top of Totara spur leading towards the Trig U sign post and north towards PioPio tarn (Awarua Hinemanu Trust land)- to mark traplines across tops.

- Mauri Oho team is at Hinerua deploying traps this week.
- Other Mahi includes - trap servicing, plant releasing and cultural health monitoring along riparian streams. Tracking tunnel monitoring is coming up. The team is partway through completing their Level 4 Certificate, Conservation (Operations).
- No Mans Road surface and culvert upgrade is excellent up to the campsite just before Lessong's trig. There's a solid base, with extra gravel dumped along the side of the road. The rutted part beyond has been patched. All up a good job!

Notes taken for the minutes:

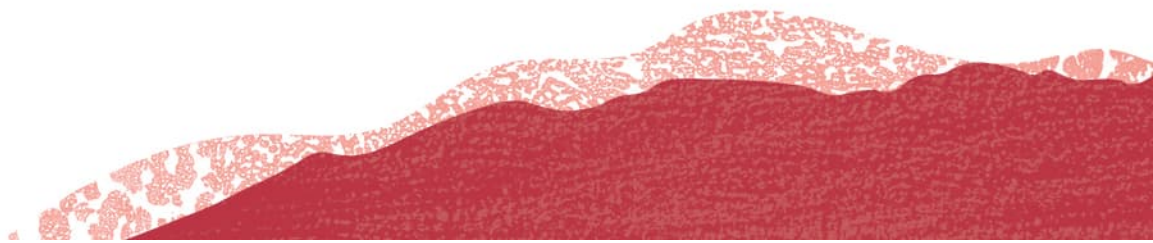
- Did not get onto RUG email listing (JM Action).
- Operation with NZDF on 26/10. Fades of traps dropped at Smith Stream Creek, Hinerua Hut, Longview Hut, Sparrowhawk Biv, Te Ekaou.
- Also waratahs which will be placed between the trig (1406hp and Piopio (1437hp) and across the tarns to the Ruahine Corner bushline.
- Made a comment on the maintenance work recently completed on No Man's Road. It looks excellent.

Mike Charlton (NZDA) – Nothing to report

Ian Patterson (NZDA Manawatū):

- Axe stolen and replaced from Heritage Lodge.
- Working Bee at Te Ekaou Hut and Forks Hut. The latter will be painted over the summer.

John Beech (MTSC) – Gold Creek Hut may be painted over the summer holiday.



Janet Wilson (RWP & PNTMC):

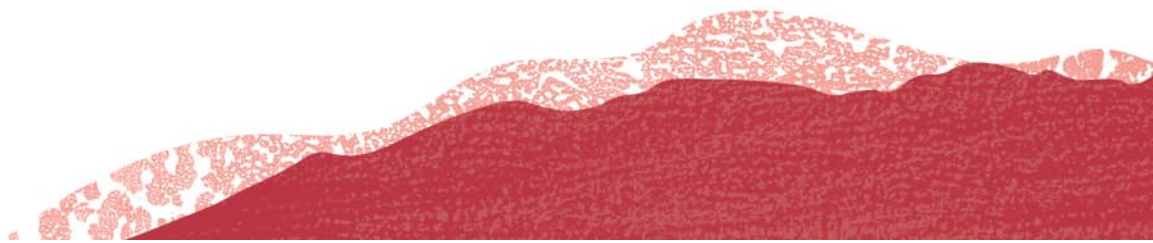
- The club had not visited their two huts Mid Pohangina and Ngamoko over the winter. Megan scheduled to paint the interior of Leon Kinvig Hut and will check out Ngamoko Hut.
- Ruahine Whio Protection (RWP), trap lines done over winter, but Oct and Nov weather has proved challenging - Kill numbers down.
- Whio Hui held. Proposal from DOC Whio Recovery Group and Genesis Energy to collect whio eggs and restock using captive breeding facilities. Consultation with iwi and interested community groups will take place. RUG members will be consulted (JW Action to circulate RWP Newsletter and translocation proposal and ask for comment by a certain date).

Dan Tuohy – DOC Community Fund now open. Available \$9.2M. Two funding streams, \$7M for species protection etc, \$2M for cultural and heritage. Closes end of Jan. Check DOC website for more info and application forms

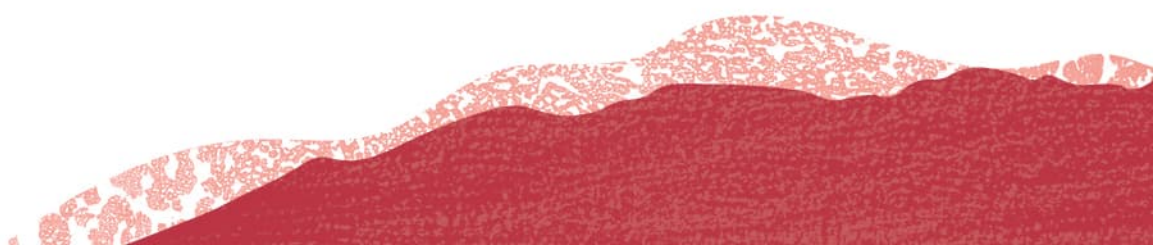
John Montgomery:

- Howletts Hut. 17 bags of coal left.
- Waikamaka Hut good order. Had issue with pipes from tank to sink. JM will fix over summer.
- Track issues over Waipawa Saddle and track down to stream needs review and re-routing due to safety issues – Demelza to up the group on this potential issue (DL: The Waikamaka Hut to Waipawa Forks Hut track was checked by the DOC inspector 2022. No issues were recorded from the saddle down to the stream. Further marking has been recommended up the river between Waipawa hut and the saddle to help with navigation upstream).

Peter Daly – Kawhatau Maintenance Group. Nothing to report.



<p>19:30</p>	<p>Topic – DOC Heritage and Visitor (H&V) Update</p> <p>Notes taken for the minutes</p> <ul style="list-style-type: none"> • DOC had two days at Kawhatau Base. Clint had allowed group to walk over his farmland to the base. It was looking good and clean. Guttering in front of the building has blown off. Demelza advised. • Access to Kawhatau via farms still blocked due to landowner. • PNTC walked upriver and reported a wasp issue. (PD Action) • Peter Daly, timing of poisoning critical. Uses Vespex. • Walking Access Commission (Kevin Ross). Ric Cullinane was going to try and make contact with landowner of the bush block? (DT Action) <p>From Demelza (Senior Ranger Heritage & Visitor)</p> <ul style="list-style-type: none"> • Rangiwahia hut - Firewood flown in Sep 2022. General maintenance done (repairs to barge flashing, deck mesh etc.). New sign at the hut junction installed to prevent visitors missing the junction to the hut and continuing up towards the high point. • Rangiwahia track and carpark - windfalls/hazardous trees cleared. • Coppermine track – reroute completed & track reopened • Wharite Peak track – reroute completed & track reopened • Daphne Road –vegetation trimmed • Pohangina Base – serviced & mowed monthly • Sentry Box hut – serviced • Longview hut service, general repairs (window, shed bolt etc.), repaired carpark toilet. • Triplex hut service • Parks Peak hut – recce after reports of toilet blowing over etc., remedial work to start shortly. • Swamp track – multiple windfalls cleared • Volunteer hut warden Brett Gillies – regular visits to Sunrise & Rangiwahia huts including long weekends (Easter, Matariki, Labour weekend). • Presentation with Brett (and Jean) at MTSC club night relating to volunteer work. • Volunteer Bill Veale – regular checks/mowing/repairs at Tamaki West. • DOC Personnel – new Supervisor recruited (joint H&V and Bio), Carl Owen. Plus 2x new rangers recruited (Monika and Louise). By the end of this month (Nov) the H&V team will be at full strength.
<p>19:50</p>	<p>Topic – Biodiversity Update</p> <ul style="list-style-type: none"> • Northern Ruahine: <ul style="list-style-type: none"> ○ Te Potae trapline. Scheduled to start in October. Weather made this difficult. Now scheduled for December. ○ Community Conservation Fund – application will be made to upgrade the Te Potae trap line. First step, Piopio tarns to bushline. Track clearing on Ikawetea Ridge has been done.



- DOC will be doing threatened plant work and deer exposures checks in mid-Jan 23 around Ruahine Corner and Colenso Hut.
- Ruahine Corner Hut to Colenso Hut traps replaced with double set 150 traps. 50-60 traps. This is happening in mid Jan 2023
- Also from Colenso Hut to Iron Bark Hut, new traps.
- DOC is reviewing action plans for treating the six threatened species.
- Goat control around Herricks Hut and No Mans Road– ground contractor been in and completed this work in November (6 sheep and 49 goats).

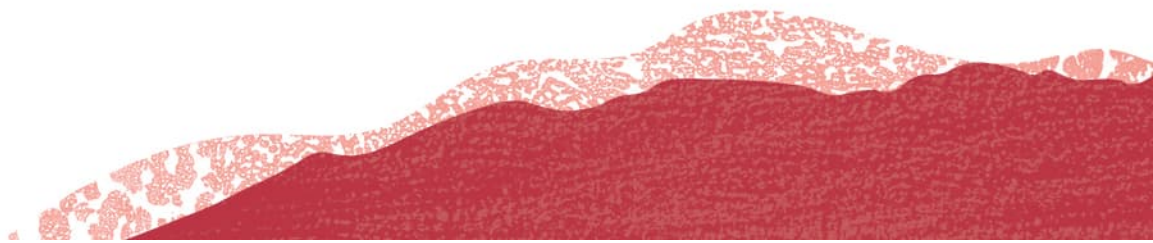


Maps of tracking
and kills.pdf

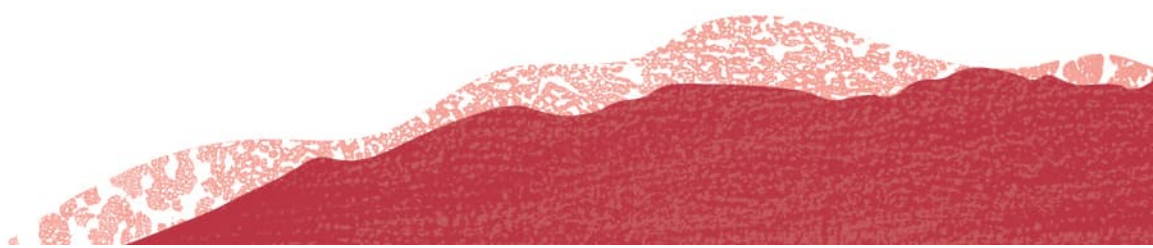
- More goat control around Southern Ruahine is still to be completed in the coming months
- Aerial goat control planned for Big Hill Station and No Man's Road area. Landowner happy with this.
- National Hunting strategy:
 - Andrew Glaser, previously in Whio Recovery Group, now appointed to develop a hunting strategy. Deer a concern now.
 - One option, open up areas for helicopters. Discussions with NZDA.
 - Involve hunters to report where deer are an issue via the DOC website?
- Cat issues – DOC now traps cats in the Manawatu Gorge
- Wilding Pines –
 - Northern Ruahine. Contorta along No Man's Road around the Salt Flats planned for Feb 23.
 - Aerial control of Taruarau faces using the Basal spraying method,
 - Kashmir Road, PF Olsen has expressed an interest in remaining pines not harvested by previous contractor.
 - Wilding pine report to be shared



Kashmir Pines
Report.docx



<p>20:10</p>	<p>Topic – Access to Forest Park</p> <ul style="list-style-type: none"> • Mokai Access – This is edging closer to finalising. The landowner wants this sorted after years of discussion. Solicitors for landowner and DOC are engaged to make this access legal, and easy to follow. Once the pathway is marked (poles moved from old route and place on new route), it will be surveyed and marked against the title. If anyone wants to be a part of the re poling team for this, please email Dan at dtuohy@doc.govt.govt.nz • Opawe Rd Access – DOC made a submission to the MDC and landowner proposal to close the paper road in lieu of a land swap. We have heard that the submissions have been seen and are waiting for the hearing to be announced. • Kelly Knight Access – needs new signs at farm entrance once access over Iwi land is confirmed. Access over Kohanui farm is good. Iwi block is difficulty. Currently with Maori land court. All Maori trustees must agree. • Purity Access – Dan to make contact with Richie Gorringe about this seasons access arrangements and updating of his phone message (DT Action) • Kawhatau Access - currently either from twin bridges, or from Rangitane Reserve via a track down to the river. This is OK in low flow. Kawhatau access is parked for now until the Mokai access is sorted. There will be access from the Mokai Patea range along the Horse track via Colenso to Kawhatau Base. • Takapari Road. Demelza to update the group on where the maintenance and gate is at. (DL: DOC do not have funding to maintain the road. DOC have met with the army who <i>may</i> repair the road this summer as a training exercise. The road will likely be gated and closed during the winter/wet times). • Sunrise carpark –Demelza to update the group on what is happening here with the carpark (DL: The capital request for a new carpark was submitted by DOC Manawatu but was declined in the 22/23 round). • Mid Pohangina – Is this being monitored should there be a potential sale of a block? Can anyone from the group expand on this, Janet? • Ellis Hut – In the Ruahine FP? Demelza to confirm that this hut is in the Forest Park and not Gwavas Forest (DL: Ellis hut is in Ruahine Forest Park).
<p>20:30</p>	<p>Topic – General Business</p> <ul style="list-style-type: none"> • Backcountry Trust (BCT) Funding – is being withdrawn. BCT will have to bid for funds via the DOC Community Fund Cultural and Heritage funding stream. (\$2m)



21:00	Next Meeting – March 2023 – early to mid-March was the general consensus
21:10	Karakia whakamutunga Ka whakairia te tapu Ki a watea ai te ara Ki a ruruki whakataha ai Ki a ruruki whakataha ai Haumi e! Hui e! Taiki e! Clear the obstacles So the path is clear To return to everyday activities
21:15	Meeting finished

<https://www.facebook.com/groups/481888953257892>

Find us on Facebook @ Ruahine User Group

Join the email discussion list by emailing: Ruahine User Group via rug rug@tarhc.org.nz

and ask to be added to the email list

